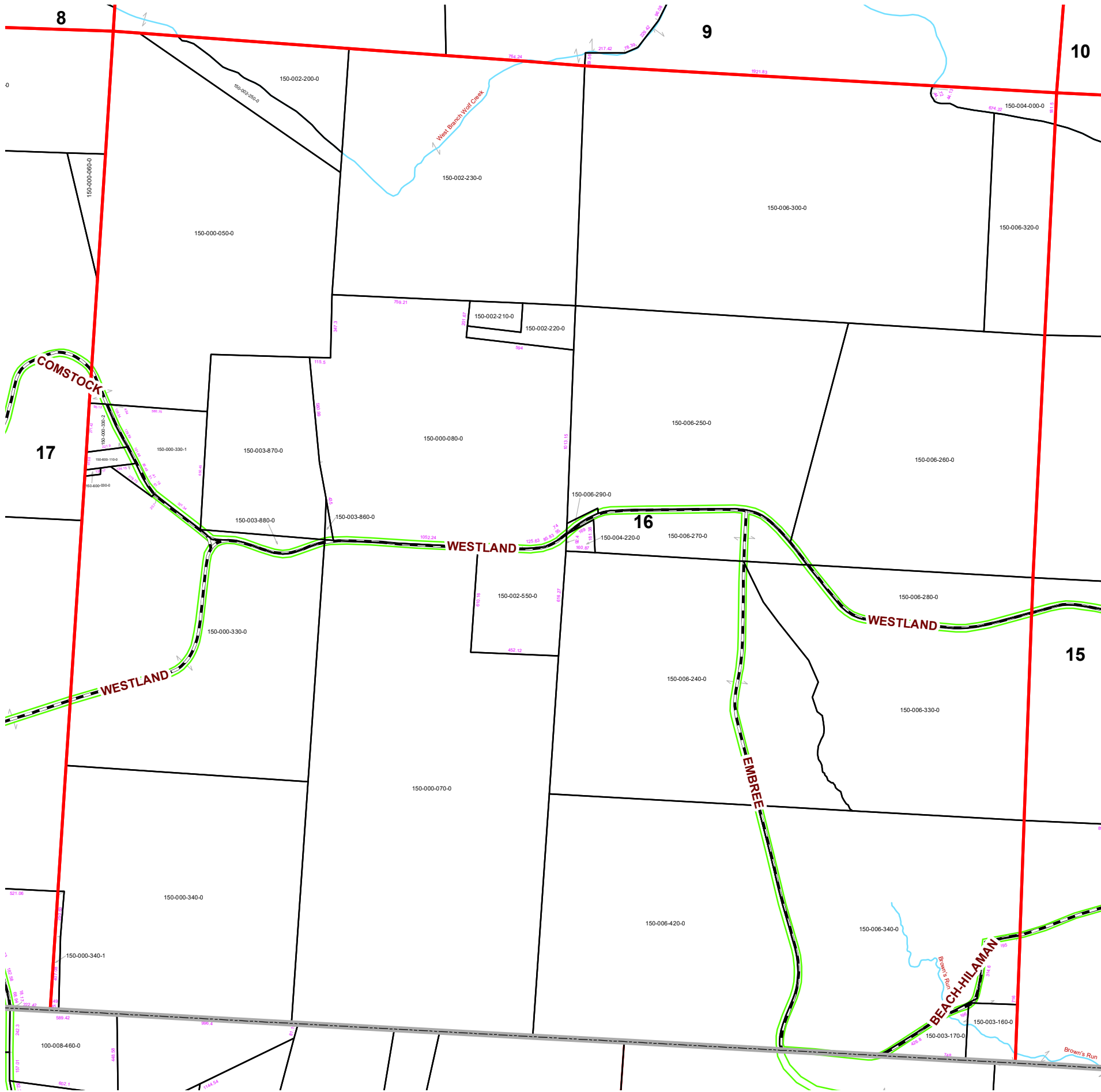
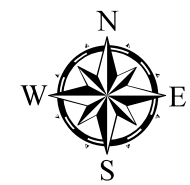


PENN TOWNSHIP SECTION 16 R 12 TWP 9 MORGAN COUNTY, OHIO



PIN	Owner	LegalDescr	Acres	VOL	PAGE	Survey_Ref
150-000-070-0	ABEL TIMOTHY A	R12 T09 S16 SD 7	74.49	OR193	440	NoSurvey.pdf
150-003-880-0	ABEL TIMOTHY A	R12 T09 S16 SD 33	0.5	OR212	390	NoSurvey.pdf
150-003-860-0	ABEL TIMOTHY A	R12 T09 S16 SD 24	0.25	OR212	390	NoSurvey.pdf
150-000-330-1	ABEL TIMOTHY A	R12 T09 S16 SD 37	5.15	OR189	684	PEN-0262.pdf
150-003-870-0	ABEL TIMOTHY A	R12 T09 S16 SD 18	13.5	OR212	390	NoSurvey.pdf
150-000-050-0	ABEL TIMOTHY A	R12 T09 S16 SD 10	47	OR143	123	NoSurvey.pdf
150-000-340-0	BENJAMIN ROBERT KEITH & DALE R &	R12 T09 S16 SD 12	39.847	OR213	3292	NoSurvey.pdf
150-000-330-0	BENJAMIN ROBERT KEITH & DALE R &	R12 T09 S16 SD 11	43.589	D.V 97	464	NoSurvey.pdf
150-600-110-0	CHURCH (ANTIOCH)	R12 T09 S16 0	0.5	D.V 14	554	PEN-0263.pdf
150-002-550-0	CROUSE RAY C JR & MARILYN A & C	R12 T09 S16 SD 19 SUR	6.364	OR221	521	PEN-0309.pdf
150-004-220-0	CROUSE RAY C JR & MARILYN A & C	R12 T09 S16 SD 17 SUR	0.487	OR224	3150	PEN-0121.pdf
150-000-340-1	FUSSNER JACOB W & MILLIE W	R12 T09 S16 SD 36 SUR	0.603	OR159	433	PEN-0232.pdf
150-002-220-0	HAINES FARMS A GENERAL PARTNER	R12 T09 S16 SD 28-29	1.86	D.V 181	1	NoSurvey.pdf
150-002-210-0	HAINES FARMS A GENERAL PARTNER	R12 T09 S16 SD 23	1	D.V 181	1	NoSurvey.pdf
150-002-230-0	HAINES FARMS A GENERAL PARTNER	R12 T09 S16 SD 9	40	D.V 181	1	NoSurvey.pdf
150-002-200-0	HAINES FARMS A GENERAL PARTNER	R12 T09 S16 SD 13	4.37	D.V 181	1	NoSurvey.pdf
150-002-250-0	HAINES FARMS A GENERAL PARTNER	R12 T09 S16 SD 14	3.45	D.V 181	1	NoSurvey.pdf
150-000-330-2	HICKERSON DANNY, STEVEN SCOLES	R12 T09 S16 SD 38	1.211	OR194	716	PEN-0263.pdf
150-004-000-0	MCINTURF ERIC TOD-MEGAN E MCINTU	R12 T09 S16 SD 21	2.056	OR216	2799	PEN-0298.pdf
150-000-080-0	TODD CHARLES J & DEBBIE ANN	R12 T09 S16 SD 8 SUR	39.551	OR177	799	PEN-0226.pdf
150-006-420-0	WILSON DOUGLAS M	R12 T09 S16 SD 5	39.46	D.V 191	17	PEN-0170.pdf
150-006-280-0	WILSON GAIL C TOD-RUSSELL A WILS	R12 T09 S16 SD 31	5.23	OR207	1784	NoSurvey.pdf
150-006-260-0	WILSON GAIL C TOD-RUSSELL A WILS	R12 T09 S16 SD 2	37.4	OR143	67	NoSurvey.pdf
150-006-320-0	WILSON GAIL C TOD-RUSSELL A WILS	R12 T09 S16 SD 22	9.12	OR143	67	NoSurvey.pdf
150-006-340-0	WILSON GAIL C TOD TO RUSSELL A	R12 T09 S16 SD 4	35.45	OR71	228	NoSurvey.pdf
150-006-330-0	WILSON GAIL C TOD TO RUSSELL A	R12 T09 S16 SD 3	37.27	OR207	1784	NoSurvey.pdf
150-006-240-0	WILSON GAIL C TOD TO RUSSELL A	R12 T09 S16 SD 20	41.5	OR142	128	NoSurvey.pdf
150-003-160-0	WILSON HARLAN B & PAMELA G	R12 T09 S16 SD 6 SUR	2	OR67	556	PEN-0013.pdf
150-003-170-0	WILSON HARLAN B & PAMELA G	R12 T09 S16 SD 35 SUR	3.67	OR67	556	PEN-0013.pdf
150-006-300-0	WILSON JOHN R & KIM	R12 T09 S16 SD 1 SUR	69.66	OR228	935	NoSurvey.pdf
150-006-290-0	WILSON RUSSELL A	R12 T09 S16 SD 33	0.14	OR207	448	NoSurvey.pdf
150-006-250-0	WILSON RUSSELL A	R12 T09 S16 SD 30	42.48	OR207	448	NoSurvey.pdf
150-006-270-0	WILSON RUSSELL A & AMY L	R12 T09 S16 SD 32 SUR	3.64	OR230	1469	NoSurvey.pdf



Boundaries			
	Hydro		Section
	Roads		Lot
	County		Township
	Parcel		ROW



Source: Morgan County Engineer's Office
 Author: Marcia Wolfe
 Date: 12/31/20



Disclaimer: The information that these maps contains is for reference purposes only. Please bring any errors to the attention of the Engineer's Office staff. Thank you